

Splunk Cloud Transition Programme



Why consider moving to Splunk Cloud?

Splunk Cloud, like Splunk Enterprise, allows you to collect, index and analyse large volumes of machine-generated data at scale. Both solutions give you valuable insights into your data allowing you to make **data-driven decisions**. Where Splunk Enterprise provides more flexibility, Splunk Cloud gives you predictable pricing and vastly reduces the need to run and manage your own infrastructure. This gives you more time to spend using the platform, implementing new use cases and generating **real business value**.

Scalability is one of the main reasons for moving to the Splunk Cloud Software as a Service (SaaS) platform. Splunk Cloud is **built to scale**, from gigabytes (GBs) to petabytes (PBs) and beyond. It also meets the industry's most stringent compliance requirements, such as SOC 2 Type 2, ISO 27001, PCI and HIPAA.



Scalability -

Scale effortlessly from GBs to PBs



Predictable Pricing -

Fixed costs with no surprise expenses



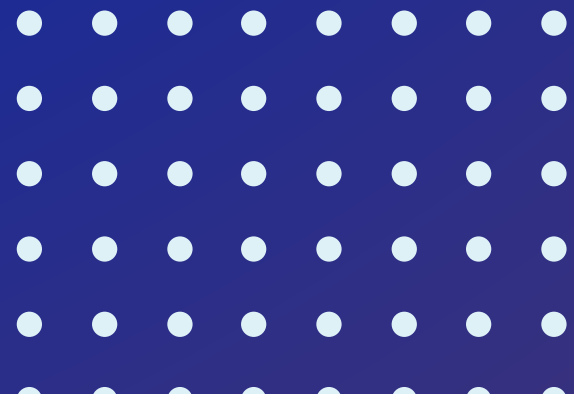
Compliance -

Meets SOC 2, ISO 27001, PCI, HIPAA standards



Infrastructure Management -

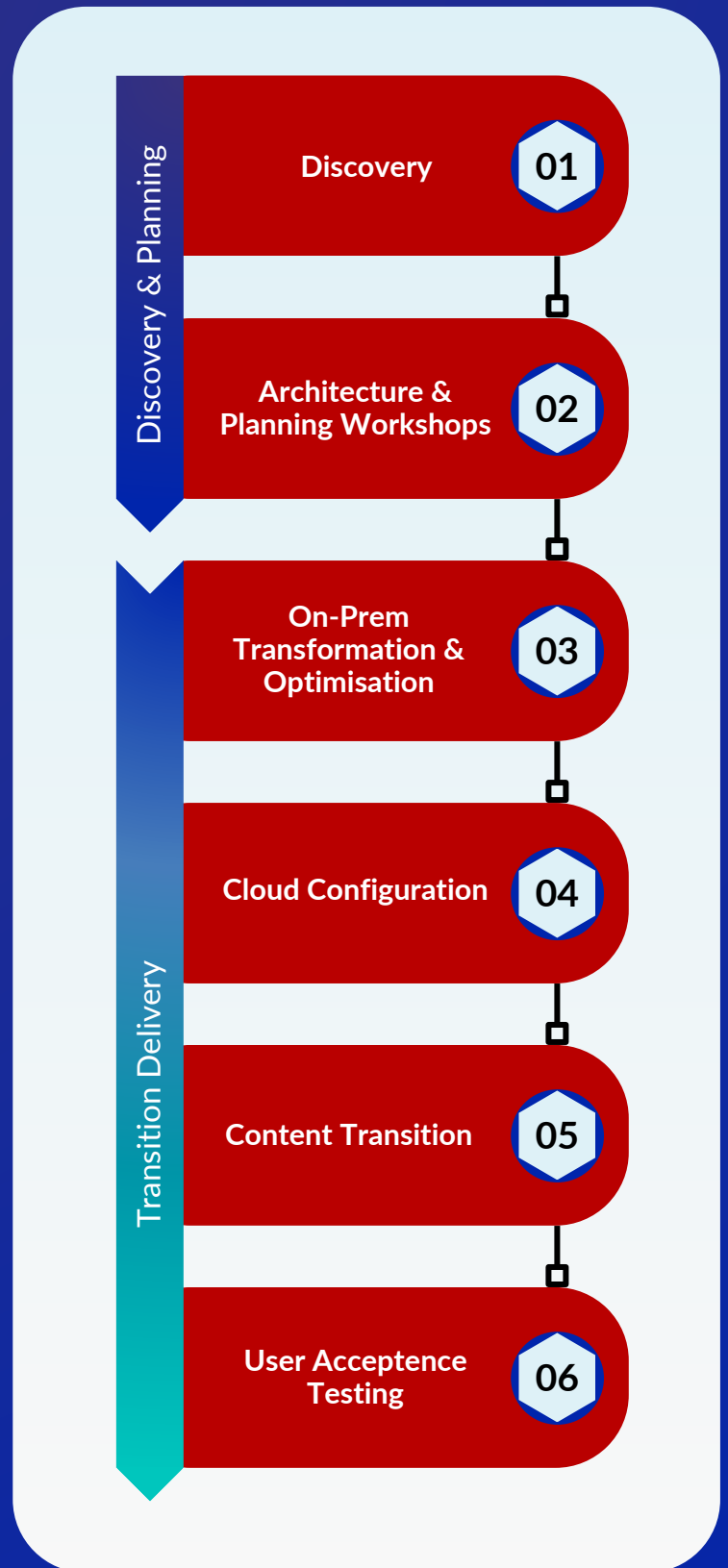
Reduces the need to manage your own infrastructure



Splunk Cloud Transition

Drawing on our **extensive experience** in facilitating Cloud Transitions, Somerford has developed a comprehensive end-to-end delivery process.

The goal is to determine if Splunk Cloud is the ideal solution for each customer by understanding the **specific needs** of each project, creating a tailored delivery plan, and executing the transition with **precision and care**.



Partnership

Somerford **collaborates closely** with customer teams and stakeholders to ensure a seamless Cloud transition. While Somerford takes the lead, customer input and involvement will be **essential throughout the process**, with all dependencies clearly outlined during the planning phase. A Cloud transition presents an excellent opportunity to align with Splunk good practices, enhancing platform efficiency and effectiveness while minimising ongoing administrative efforts.

Discovery

The first stage of the process focuses on assessing whether Splunk Cloud is the best solution. We provide an **overview of Splunk Cloud**, highlighting the key differences between On-Prem and Cloud environments.

To gain insight into the current Splunk instance and its usage, we ask a series of questions regarding its configuration and setup. If necessary, we can also conduct a **system health check** to identify any critical issues that should be resolved prior to the transition. This information helps us define the approach for the next phase of the project.



Architecture and Planning Workshops

During this phase, we carry out a **deeper analysis** of how Splunk is currently being used. We facilitate a series of workshops with key customer stakeholders to gain a thorough understanding of the system's infrastructure.

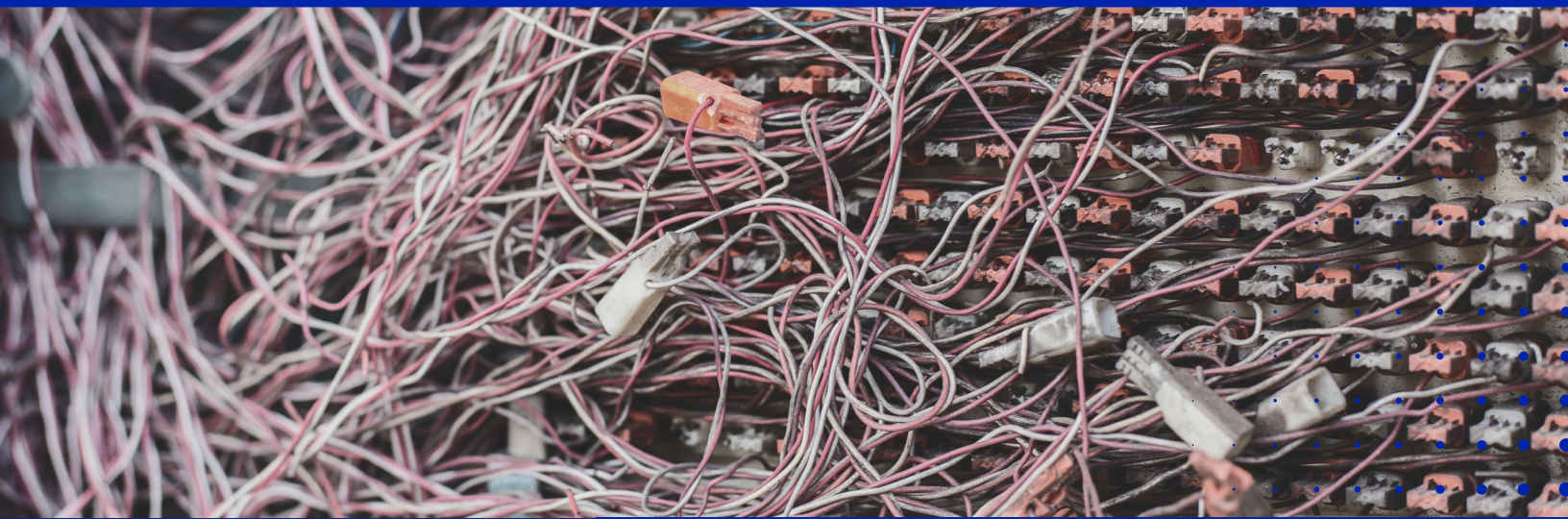
These sessions help us examine how data is ingested, processed, and utilised within the platform. Our aim is to identify existing workflows, address any bottlenecks, and uncover opportunities for optimisation to ensure a **seamless** transition and improved performance in the Cloud environment.

The result of this stage is the creation of a **comprehensive** delivery plan for the Cloud transition, which outlines customer input and dependencies while specifying any necessary contributions from Splunk for specific tasks. Additionally, we provide a Solution High-Level Design, a Statement of Work, and the associated costs.



On-Prem Transformation & Optimisation

At this stage, we begin preparing the existing Splunk on-prem system for the transition to Splunk Cloud. The specific preparations needed will have been outlined during the **planning phase**. This typically involves a range of optimisation and remediation tasks, including adjustments to apps, indexes, users, roles, and more. At this stage, the new Splunk Cloud stack is also initiated.



Before: Complex, Inefficient, Fragmented

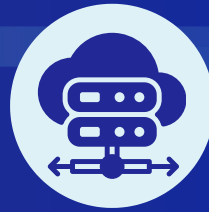


After: Streamlined, Optimised, Cloud-Ready

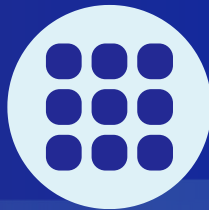
Cloud Configuration

After completing the On-Prem preparation and deploying the new Splunk Cloud stack, we begin configuring the Cloud environment to receive the data and configuration.

We verify that the Splunk Cloud stack has been set up according to specifications and ensure all required connectivity is established. Next, we deploy the necessary Splunk Apps, Technical Add-ons (TAs), indexes, users, and roles. At this stage, we recommend implementing **change control measures** on the On-Prem Splunk configuration to maintain system stability during the transition.



Cloud Stack Validation - Ensures the foundational setup and connectivity are correct



App & TA Installation - Configures essential components for the platform to function correctly



Indexes, Users, & Roles Configuration - Ensures data organisation, security, and access control in the cloud



Change Control Measures - Safeguards the system from any modifications that could disrupt the transition

Content Transition

Data transition can be accomplished through dual forwarding over a specified time period and/or through a bulk migration of historical data, depending on the customer's data retention needs. Somerford will closely monitor the migration process to ensure that all relevant data is successfully transferred.



Custom user content and apps will also be migrated to Splunk Cloud after a thorough review and cleanup process has been completed.



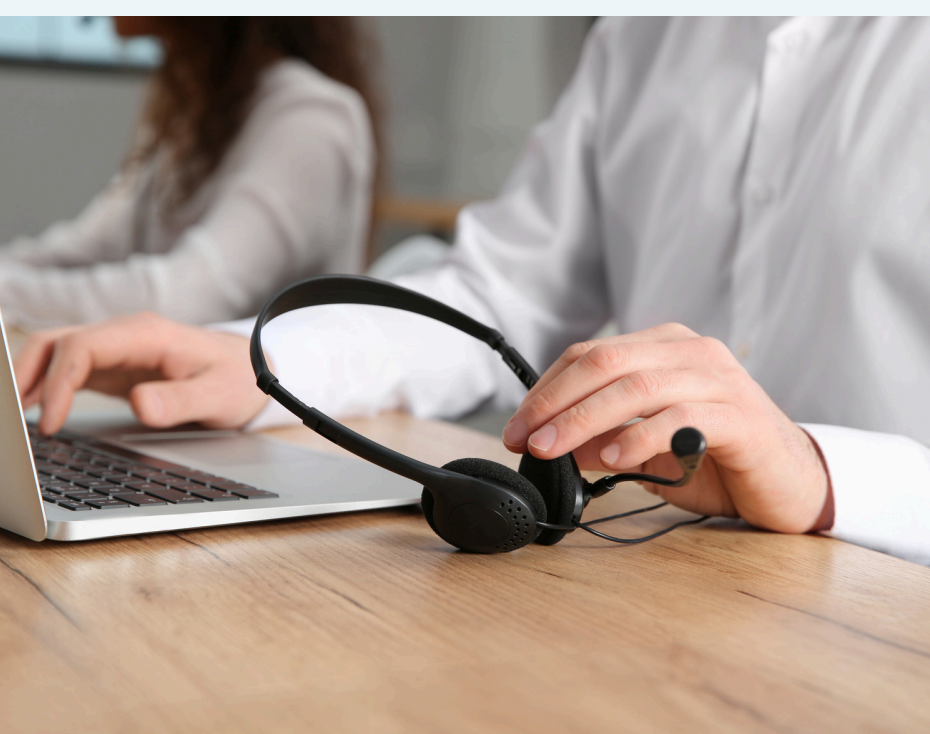
User Acceptance Testing

The data and configuration transition is now complete, and the system is handed over to the customer for **User Acceptance Testing (UAT)**. Somerford will collaborate with the customer to resolve any issues identified during UAT, ensuring the system is suitable for acceptance into **Business As Usual (BAU)** operations.



Post Delivery Support & BAU

Somerford offers enablement workshops on managing the new Splunk Cloud environment, along with **post-launch hypercare support** as needed to facilitate a smooth transition and a positive customer experience. Additionally, Somerford provides ongoing Splunk support to help customers maximise the value of their new Splunk Cloud environment through regular health checks and technical engagement.



Helpdesk



8*5 Support desk providing first class support and resolves over 80% of calls in-house.

Healthcheck



A regular check-in on your Splunk instance providing a report on findings.



Another option available is Somerford Connect, designed for customers seeking a flexible managed-service solution. For more information about Somerford Connect, please visit:

<https://www.somerfordassociates.com/somerford-connect/>

Why Somerford?

Somerford has a **successful track record** of delivering large and complex Cloud Transitions. We have completed transitions for a variety of customers and environments, both large and small, as well as more complex operations to merge On-Prem instances with existing very large Cloud stacks. We have also completed Cloud Transformation Programmes globally on time and to budget.

Due to our successful track record of Cloud Transformation we have built our own **bespoke transition process**. We take the time upfront to make sure we fully understand our customer's environment and requirements to ensure that a smooth transition to Cloud is achieved.

As an **Elite partner** with Splunk and a large practice of Certified Splunk Consultants, we have the experience to ensure a smooth transition.

<p>splunk> Partnerverse</p> <p>Manage</p> <p>ELITE</p>	<p>splunk> Partnerverse</p> <p>Cloud Migration: Co-Delivery</p>	<p>splunk> Partnerverse</p> <p>Security Solutions</p>	<p>splunk> Partnerverse</p> <p>Energy & Utilities</p>	<p>splunk> Partnerverse</p> <p>Telecommunications</p>
<p>splunk> Partnerverse</p> <p>Sell</p> <p>ELITE</p>	<p>splunk> Partnerverse</p> <p>Cloud Migration</p>	<p>splunk> Partnerverse</p> <p>Public Sector</p>	<p>splunk> Partnerverse</p> <p>Retail</p>	<p>splunk> Partnerverse</p> <p>Financial Services</p>

Somerford's Elite Splunk Partner Badges





info@sommerfordassociates.com

[sommerfordassociates.com/contact-us/](https://www.sommerfordassociates.com/contact-us/)



UK Commercial Office

Unit 117
Watermoor Point
Watermoor Road
Cirencester
Gloucestershire
GL7 1LF

UAE Office

Sommerford Middle East Computer
System Trading LLC
Al Habtoor Business Tower
Servcorp, Level 21,
Dubai Marina, UAE
PO Box 29805